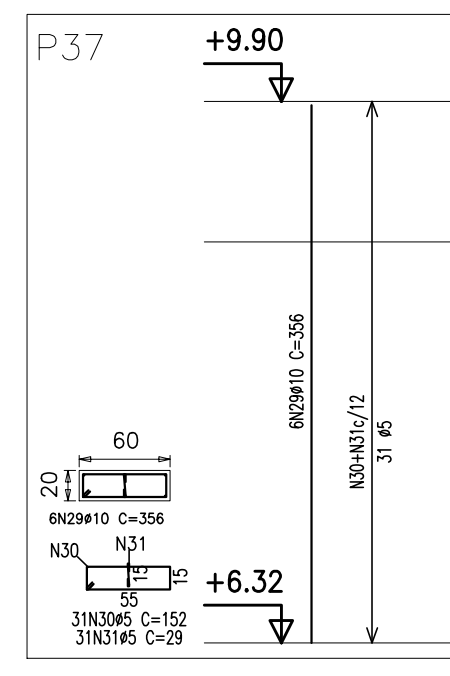


Elemento	Pos	Diam	Q	Dob	Ret	Dob	Comp	Total	CA-50	CA-(kg)
		Ø (mm)	(mm)	(mm)	(mm)	(mm)	(mm)	(mm)	(mm)	(mm)
P1-P3-P4-P5-P6-P9	1	Ø 10	8	410	102	410	2460	154	2460	15.4
P12-P15-P16-P19	2	Ø 5	32	102	152	102	298	928	152	7.6
P20-P23-P24	3	Ø 5	32	102	152	102	298	928	152	7.6
				Total=	102	102	102	102	16.9	16.9
								(112):	202.8	120.0
P2	4	Ø 10	8	410	102	410	3280	206	3280	20.6
P4	5	Ø 5	32	102	182	102	324	928	182	9.1
P6	6	Ø 5	32	102	182	102	324	928	182	9.1
				Total=	102	102	102	102	22.7	11.7
P8	8	Ø 5	32	102	152	102	484	928	152	7.6
P9	9	Ø 5	32	102	152	102	484	928	152	7.6
				Total=	102	102	102	102	16.9	16.9
P5	10	Ø 10	8	410	102	410	3280	206	3280	20.6
	11	Ø 5	32	102	152	102	484	928	152	7.6
	12	Ø 5	32	102	152	102	484	928	152	7.6
				Total=	102	102	102	102	22.7	10.0
P3-P11-P17-P18-P14	13	Ø 10	6	410	102	410	2460	154	2460	15.4
P1-P11-P17-P18-P14	14	Ø 5	32	102	152	102	484	928	152	7.6
P12-P15-P16-P19-P20	15	Ø 5	32	102	152	102	298	928	152	7.6
P21-P22-P27-P28	16	Ø 5	32	102	152	102	298	928	152	7.6
P29				Total=	102	102	102	102	16.9	16.9
								(13):	216.7	120.0

Nota:

Pranchas de referência: 16/64

[illegible]